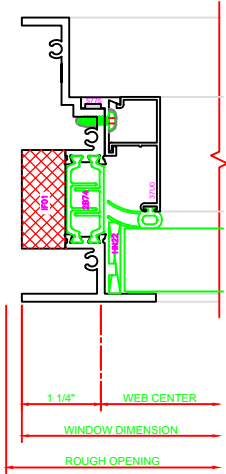


OPTIONAL MULTI-POINT LOCK

130	HEAD
	SERIES: 450X CASEMENT IN 4-BAR ARMS

430	JAMB
	SERIES: 450X CASEMENT IN 4-BAR ARMS

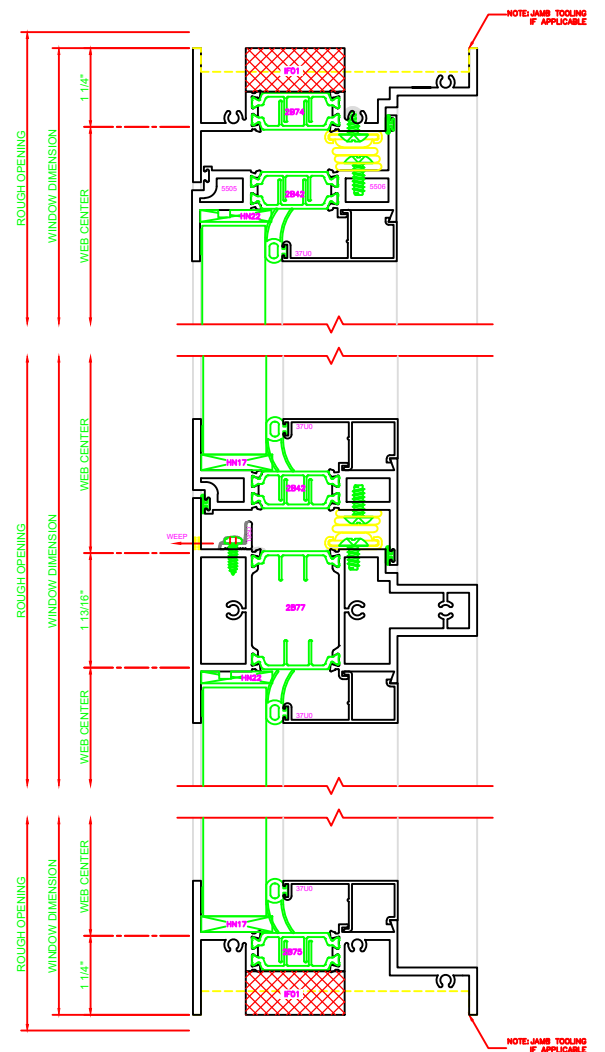
431	JAMB
	SERIES: 450X CASEMENT IN



402	JAMB
	SERIES: 450X FIXED

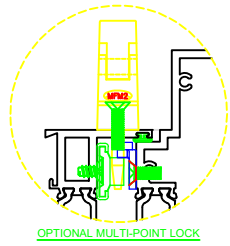
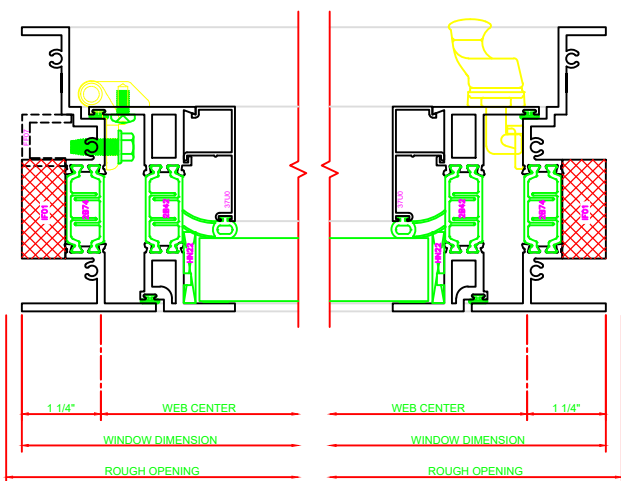
533	MEETING RAIL
	SERIES: 450X C.I./FIXED 4-BAR ARMS

200	SILL
	SERIES: 450X FIXED



## 4-BAR ARMS BUTT HINGE

13 = **ERECTOR NOTE:**  
THE HINGED JAMB FRAME SHALL BE INSTALLED PLUMB. ALL HINGES SHALL BE SECURELY BLOCKED AND ANCHORED TO THE CONDITION THROUGH THE HINGES OR AS CLOSE AS POSSIBLE TO THE HINGES.

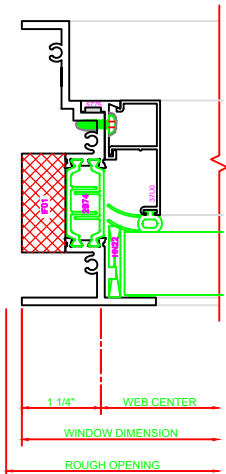


OPTIONAL MULTI-POINT LOCK

131	HEAD
	SERIES: 450X CASEMENT IN BUTT HINGE

432	JAMB
	SERIES: 450X CASEMENT IN BUTT HINGE

431	JAMB
	SERIES: 450X CASEMENT IN



402	JAMB
	SERIES: 450X FIXED

537	MEETING RAIL
	SERIES: 450X C.I./FIXED BUTT HINGE

200	SILL
	SERIES: 450X FIXED

